

eRideable Fire Prevention Tips



In case of a fire, immediately call 000 then call Safer Community on 9266 4444.

01

Do not attempt to make or modify your device. Purchase a reputable eRideable.

02

Do not charge with damaged, non-certified equipment.

03

Do not attempt to repair or modify batteries – seek professional advice.

Signs of damaged equipment

Charger case or battery enclosure:

- Cracks or breaks
- Discolouration
- Water ingress
- Bulging or misshaped
- Strange sound or smell

Charger cord:

- Cuts
- Exposed wires
- Severe kinks
- Discolouration
- Melting
- Strange sound or smell

Buy your charger from trusted manufacturers.

04

*Hint: Look for the tick.
This shows the product is certified to Australian Standards.*

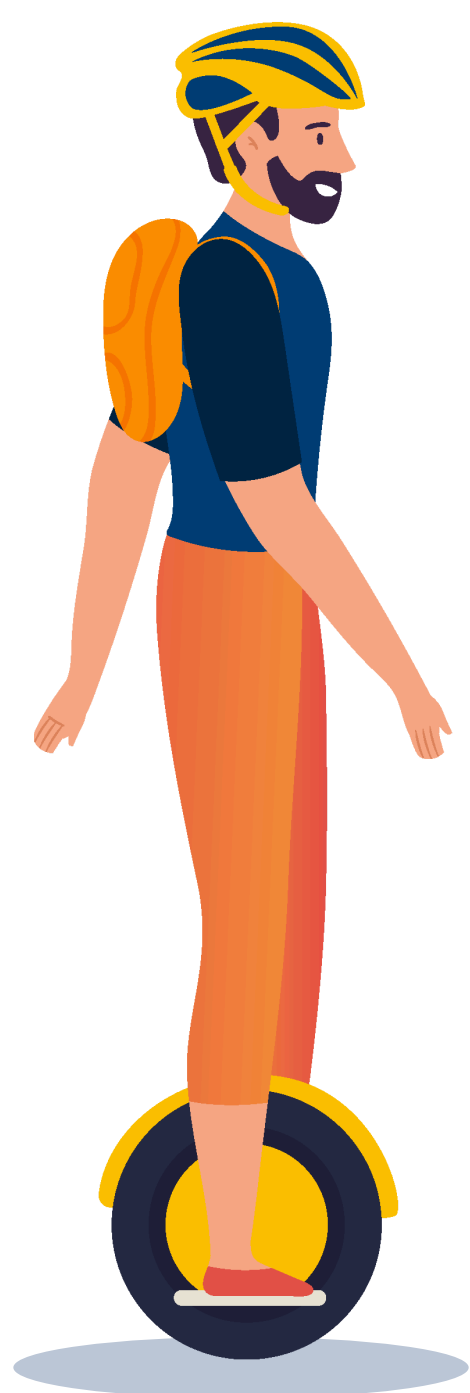


05

Be aware of your eRideable's input charging voltage, and never use a charger that has a different output charging voltage.

06

Unplug the charger as soon as the battery is full. Never leave your device plugged in while you are sleeping.



Questions?

Email Curtin's Transport team via transport@curtin.edu.au



Curtin University